

Use of Tabletop Exercises in Clinics



What is the role of exercises in clinical settings?



Use of Tabletop Exercises in Clinical Settings

- ◆ Serve as an important step in an overall exercise plan.
- ◆ Facilitate relationships among personnel from different clinical departments.
- ◆ Familiarize participants with roles, responsibilities, functions, plans, policies, and procedures.
- ◆ Identify important gaps and corrective actions to address them.
- ◆ Explore recovery issues.

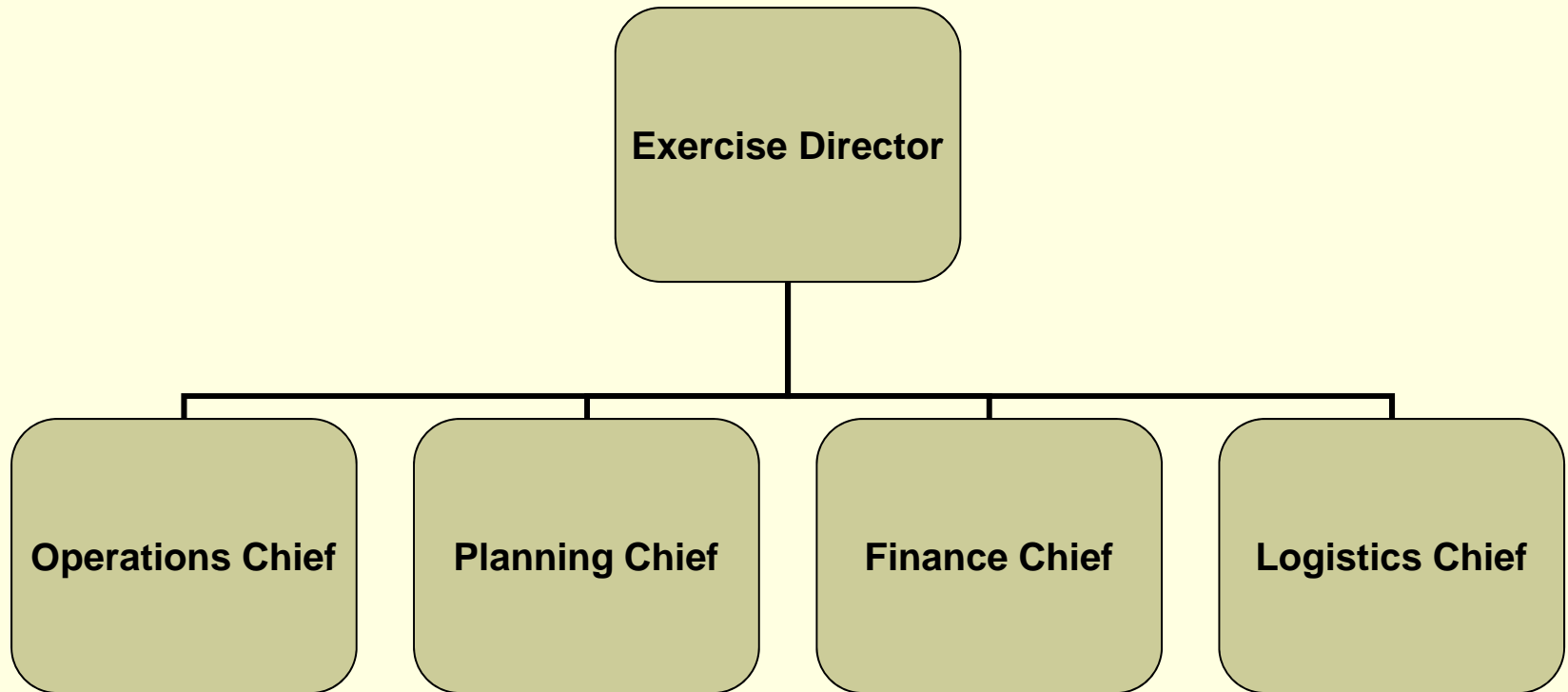
Clinics Participating in Community Exercises

- ◆ Clarify how healthcare will meet the needs of the community.
- ◆ Explore the interface between public health and clinical care providers.
- ◆ Examine response issues such as resource allocation and distribution.
- ◆ Address coordination among healthcare agencies and government agencies for an effective community response.

Design Team Considerations



Design Team Functions



Forming a Design Team

- ◆ Team leader and administrative/logistical support staff
- ◆ Medical Director
- ◆ Nursing Director
- ◆ Others as indicated by the clinic's Emergency Response Plan
- ◆ Consider multiple clinics and affiliated hospitals

Exercise Objectives

- ◆ Test/assess Incident Command System
- ◆ Improve coordination/communication between departments
- ◆ Improve coordination/communication with other systems
- ◆ Explore facilities issues
- ◆ Explore staffing issues
- ◆ Assess various facets of specific areas of response

Considerations for Players



Select Players by Function

Decision Makers and Support	Clinical Services	Infection Control/Epi	Support Services
<ul style="list-style-type: none">◆ Administration◆ Safety◆ Public Affairs◆ Risk Manager	<ul style="list-style-type: none">◆ Nursing◆ Respiratory Therapy◆ Clinical Services	<ul style="list-style-type: none">◆ Infection Control◆ Laboratory◆ Occ Med	<ul style="list-style-type: none">◆ Pharmacy◆ Environmental Services◆ Materials Management◆ Radiology◆ Facilities◆ Maintenance

Considerations for Scripts and Data Injects



Scripts and Data Injects

- ◆ Epidemiology Information
- ◆ Include situational awareness (# of triage calls, other call volume, staff numbers)
- ◆ Consider HR issues
- ◆ Include healthcare system as a whole information (wait time in ERs)
- ◆ Consider environment of care issues
- ◆ Joint Commission requirements
- ◆ Community linkages

Questions/Discussion

Brooke DeKok, REHS

brooke.dekok-wodziak@co.hennepin.mn.us

612-348-5652